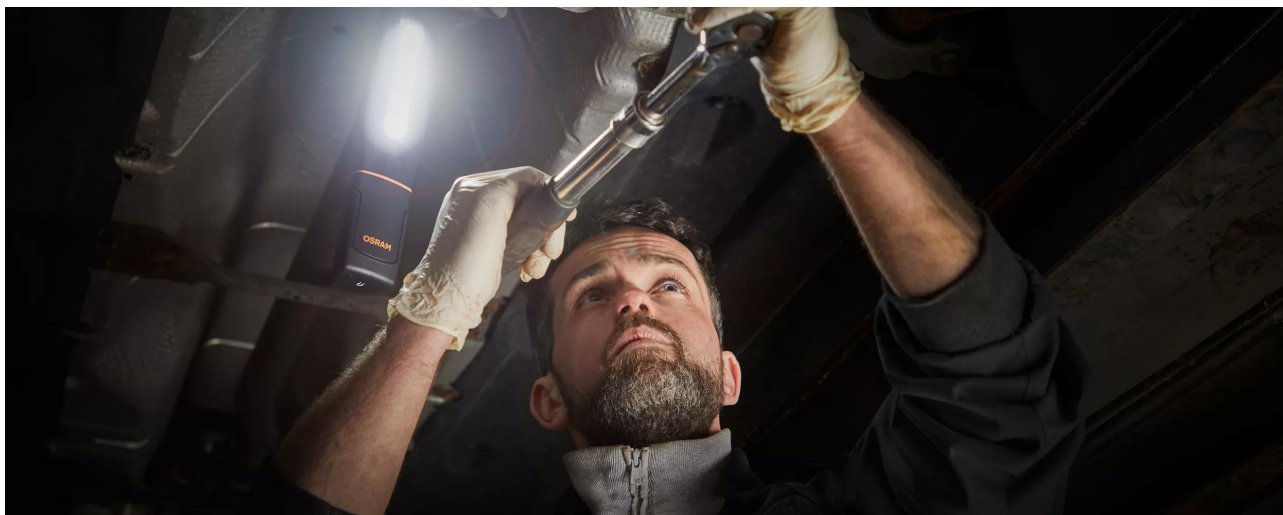


LEDinspect MAX500

LED Inspectionlights



Multi-Angle Flex & Twist

High flexibility due to multiple positioning possibilities



2in1

LED Inspectionlight & UV lamp in one



500 Lumen

Three light functions - high with up to 500 lm, low with up to 250 lm and torchlight function with up to 70 lm



2-year-OSRAM guarantee*

Systematic quality assurance measures underpin the premium workmanship and functionality of our products. Innovative technology and excellent quality really pay dividends for our customers.



Light is versatile

With three light functions - high with up to 500lm, low with up to 250lm and UV torchlight, the MAX500 offers high flexibility and different application possibilities. The 360° twist and 180° flex base give maximum flexibility to be able to adjust the angle of light exactly where needed. The integrated charge indicator shows the charging status of the rechargeable battery - up to 4.5h operating time at high power or up to 7.5h at low power. In accordance with the IP protection class IP65, this inspection light has protection against the ingress of dust and water and is tested for impact resistance in accordance with IK08. This inspection light contains an integrated hook & magnets for hands-free

work and easy attachment and is therefore ideal as a light for manual activities, car repairs and in everyday life. In addition, OSRAM grants a 2-year guarantee on this product* USB charging cable and mains charger included.

Product family datasheet

Technical data

	Product information		General Product Information	Electrical Data	
Product description	Application (Category and Product specific)		Global order reference	Nominal voltage	Nominal wattage
INSPECTION LAMP	LED inspection lights		LEDIL402	3.7 V	16 W
	Photometric Data				Physical Attributes & Dimensions
Product description	Light color LED	Nominal luminous flux	Color temperature		Height
INSPECTION LAMP	White	500 lm	5700 K		44.0 mm
					LED module information
Product description	Width	Length	Product weight		Number of LEDs per module
INSPECTION LAMP	59.0 mm	253.0 mm	350.00 g		2
	Colors & materials		Lifetime Data	Additional product data	
Product description	Base color		Guarantee	Scope of battery	Number of included batteries
INSPECTION LAMP	Black / Orange		2 years	Yes	1
			Capabilities	Certificates & standards	Logistical data
Product description	Type of Battery		Technology	IK Class	Watt hour per battery
INSPECTION LAMP	Rechargeable		LED	IK08	16.65
	Environmental & Regulatory Information Information according Art. 33 of EU Regulation (EC) 1907/2006 (REACH)				
Product description	Candidate list substance 1	CAS No. of substance 1		Safe use instruction	Declaration no. in SCIP database
INSPECTION LAMP	Lead	7439-92-1		The identification of the Candidate List substance is sufficient to allow safe use of the article.	4ea2e5ca-7a27-48f2-b810-484a294b269a

Download Data

File	
	User instruction LEDinspect MAX 500 LEDIL402
	User instruction GPRS_Safety symbols instructions
	Movie application LEDinspect Inspection Lights Trailer

Legal advice

Application advice:

For more detailed application information and graphics please see product datasheet and user instruction.*for precise conditions please refer to:

www.osram.com/am-guarantee

Application advice

For more detailed application information and graphics please see product datasheet.

Disclaimer

Subject to change without notice. Errors and omission excepted. Always make sure to use the most recent release.